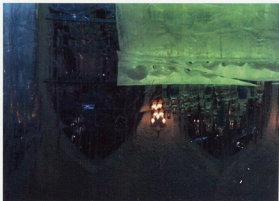
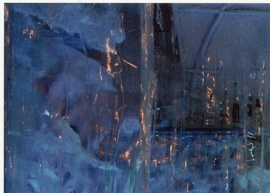


DESIGN TRADE™

THE PEOPLE, PRODUCTS & PROJECTS OF FINE DESIGN



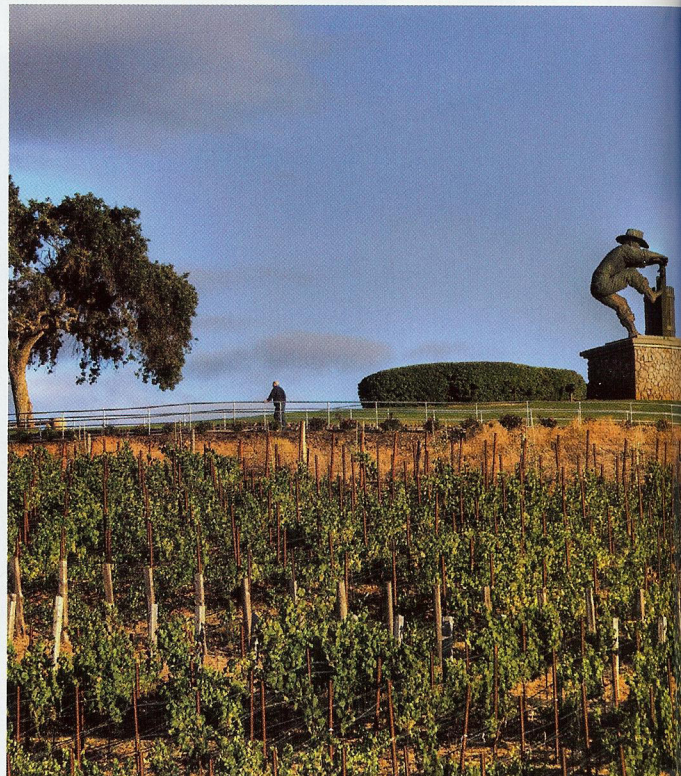
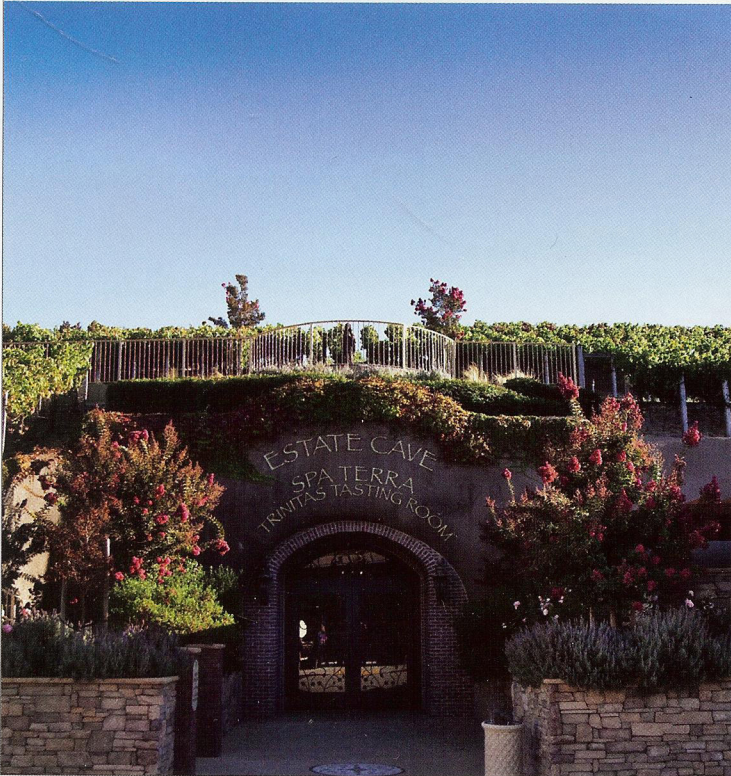
\$6.95



0 2>

0 74470 23744 0

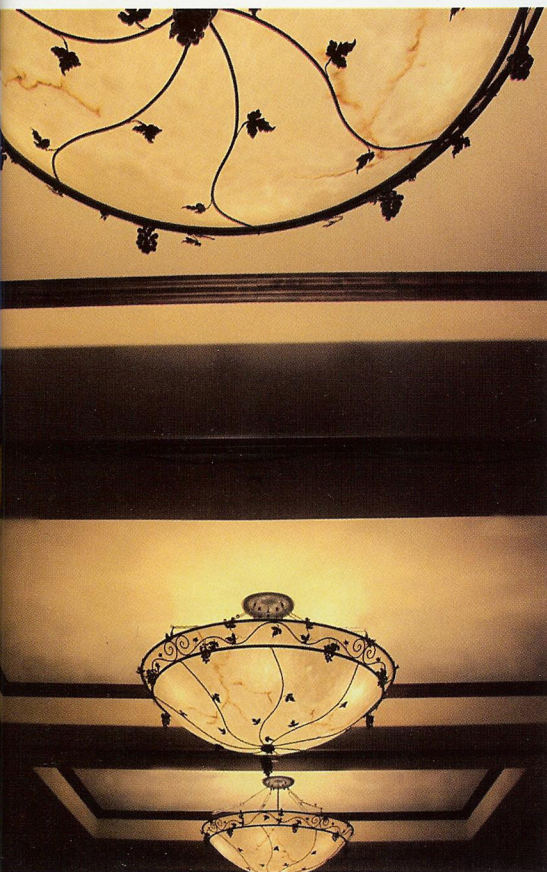
VOLUME 4 ISSUE 2





Meritage Resort

By Kelly Sweeney



Nestled among the rolling hills and sweeping vineyards of Napa Valley in Northern California, sits the Meritage Resort and Spa, a jewel in Wine Country's crown. The Tuscan-inspired resort lies on eight acres of private vineyards at the base of the celebrated Grape Crusher statue, created in 1987 by Gino Miles and dedicated to the workers who labored in the vineyards. The resort, managed by the Pacific Hospitality Group, boasts seasonal farm-to-table cuisine, wine tastings at the Estate Cave and a 9,000-square-foot spa, along with a wedding chapel, plenty of event space and a variety of outdoor entertainment options, making the Meritage Resort and Spa a true destination resort. The resort recently unveiled a \$40-million, 19-month expansion that enlarged the resort by a total of 272,000 square feet, which included the addition of 165 new guestrooms and suites, Crush Ultra Lounge, Blend Café, a 7,300-square-foot ballroom, a fitness studio and a piazza.

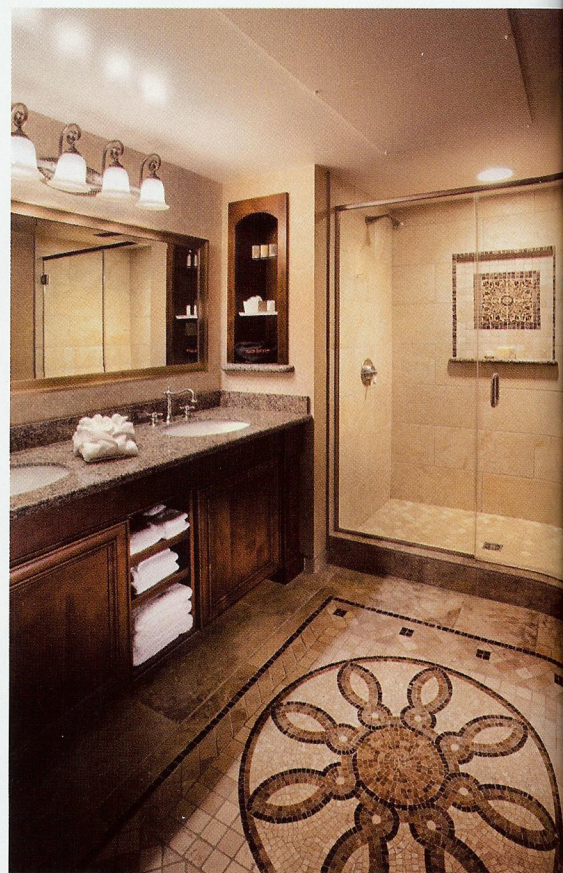
Dining and entertainment options abound at the Meritage Resort. Guests can grab a snack, a quick bite to eat or the perfect cup of coffee at Blend Café; dine at Siena, the resort's gourmet restaurant; gather for drinks at the Lobby Bar; attend a wine tasting or host a private event in the Trinitas Cellars Tasting Room; or have some fun at Crush Ultra Lounge, a sports-themed lounge with six luxury bowling lanes, a pool table and shuffle board court. Recreational amenities are also plentiful and include two pools, three hot tubs, fountains, outdoor fireplaces, a bocce ball court, croquet lawn and hiking trails that allow for spectacular views of the vineyards.

Maraya Droney of Maraya Droney Design was the lead interior designer for Spa Terra as well as for the recent renovation project. She was tasked with creating interior spaces that fit in with the resort's Tuscan style while keeping the design and color palette fresh. To accomplish

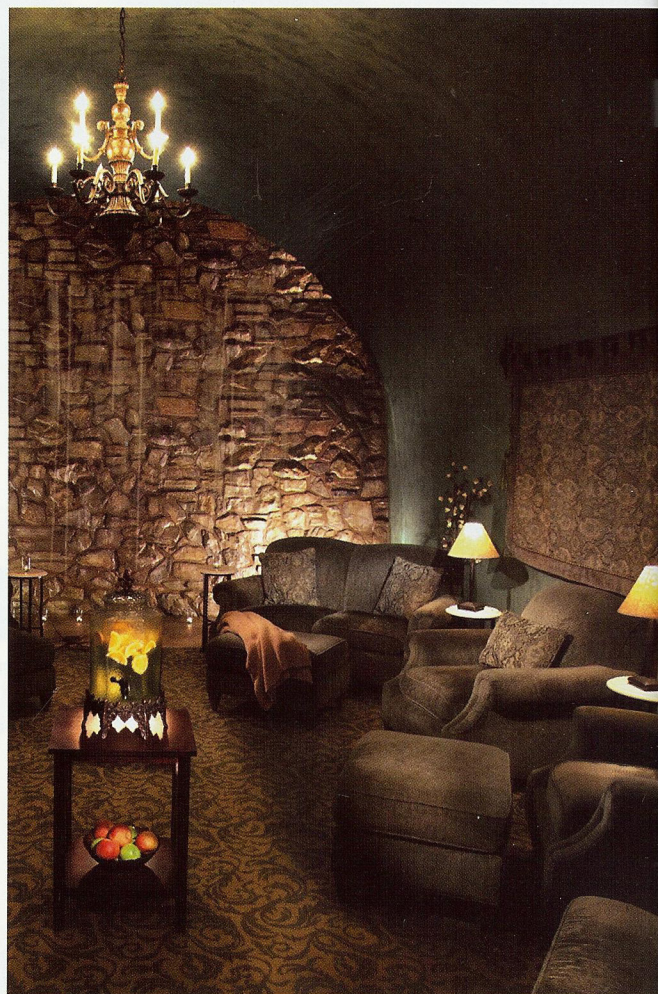
these design goals, many of the spaces, including the 165 new guests rooms feature dark wood with scrolling patterns and wicker furnishings. Droney infused the design for Crush Ultra Lounge with color and light to create a welcoming atmosphere. The glowing bar top is crafted from blue glass with light touching it and the columns surrounding the bar feature colorful mosaic tile. Creative, multihued lighting and a freeform Couristan carpet complete the lounge's look.

Droney's design for the resort's newest ballroom, the second largest in the area, incorporated warm inviting colors and materials, inspired by the colors of Italian pottery, combined in a traditional upscale style. The pale gold wall coverings and rich Couristan custom carpet in warm spicy colors create a sophisticated look, but are neutral enough to complement any accent colors, making this ballroom perfect for weddings and other special events.

Perhaps the most unique element of the Meritage Resort and Spa is the Estate Cave — a 20,000-square-foot underground wine cave that houses Spa Terra, Trinitas Cellars Tasting Room and additional entertainment space. Wine caves, such as the Estate Cave, are in integral part of the wine industry because they contain the high humidity and cool temperatures required for proper wine aging. Because of the high humidity, Droney used as little wood as possible in her designs, opting instead for materials that would withstand the humidity, including porcelain, granite and wrought iron.







Spa Terra

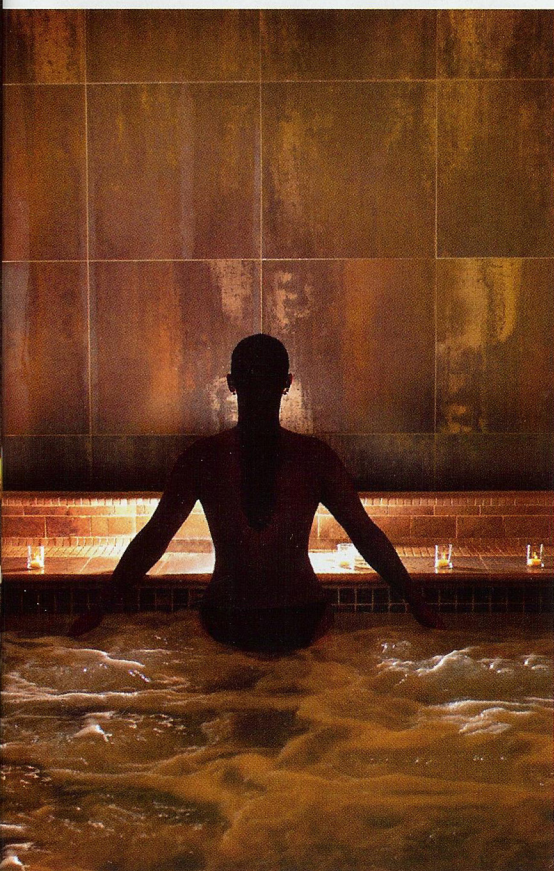
*T*he resort's 9,000-square-foot spa is the world's first spa built in a wine cave. Droney's goal for the spa's design was to keep the overall look as close to the look of a wine cave as possible while incorporating the Tuscan detailing that is seen throughout the resort. The spa offers a variety of treatments designed for both men and women, many of which contain grape seed extract and a variety of other ingredients native to Napa Valley.

The spa boasts 12 treatment rooms, including a lavish couple's suite, steam grottos, whirlpools and a relaxation lounge. The relaxation lounge incorporates a soothing waterfall, luxurious tapestries and a water bar so guests can unwind and hydrate upon entering Spa Terra. Separate his and hers steam grottos and soaking pools further relax guests and are perfect before or after receiving spa treatments.

Architect David Bury and Droney used high ceilings and large open doorways to create a sense of space that belies the fact that the spa is located underground. Stained concrete floors with inset mosaic medallions and porcelain tiles add to the spa's Tuscan style while being easier to maintain than stone tile. The humidity was a concern here as well, so Droney used waterproof materials that resemble wood, as well as other water-resistant materials.

Droney revealed that the couple's massage room was one of her favorite spaces to design because the room's larger size allowed her to incorporate more design elements, including a wall of tile and porcelain tile mosaic flooring. Droney used a variety of resources in the renovation project including Arizona Tile and Stone, NS Ceramics, Fabricut Contract, Kravet Contract, Couristan Carpet, Designtex Wallcoverings, Seabrook Wallcoverings and Materials Marketing Corporation.

The result of the \$40-million renovation is a luxurious resort perfect for wine lovers and non-wine lovers alike. Guests can enjoy a spa treatment or two, enjoy gourmet dining, sample delectable wines from the region and take in a variety of outdoor activities without ever leaving the grounds. **DT**



Page 76 top: The Meritage Resort & Spa; Bottom (left to right): The entrance to the resort's Estate Cave; Page 77 top: The welcoming entrance to the Meritage Resort; Bottom: The pendant lighting throughout the resort's conference center area features playful grapevine motifs; Page 78 top: Guest bathrooms are appointed with granite countertop, dark wood cabinetry and mosaic tile floors; Bottom: One of the newly added guest bedrooms; Page 79 top: One of the resort's two pools offers a spectacular view of the vineyards; Bottom (left to right): Crush Ultra Lounge features colorful lighting; The main lobby offers a variety of seating options for guests; Page 80 top: Spa Terra features brick accents combined with granite countertops; Bottom (left to right): The couple's treatment room features a large soaking tub and mosaic tiles on the floor and wall; The relaxation lounge allows guests to unwind with a soothing waterfall and cozy seating; Right top: One of the hallways at Spa Tierra, showing the mosaic tiles, brick accents and wrought iron lighting; Bottom: The whirlpool offers a great place to relax before or after a treatment.